

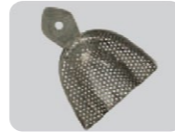
# Operation procedures

Take the normal set as an example:

## STEP 01

### Choose a suitable tray

A rigid tray of sufficient size and wall height is recommended to offer stability and support for impression



## STEP 02

Clean and dry hands, disposable polythene gloves are recommended



## STEP 03

### Take the first impression

Base and catalyst 1:1 with corresponding measuring spoons

Use the fingertip to mix the materials till the mixture color become even without streak, Mixing time 30s

Knead the putty into a stick and place in the tray, seat the tray slowly into correct position, total operation within 1min30s

Bite and maintain passive pressure for 3min until material becomes solid.



## STEP 04

Adjust the putty impression with silicone cut to make out the row spillway space



## STEP 05

Inject Light Body into putty impression and prepared tooth, the intraoral tip should remain submerged in material while syringing, total operation within 2min15s.



## STEP 06

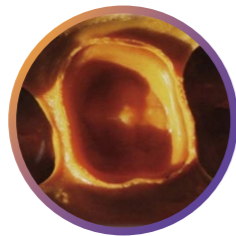
Take the second impression, intraoral setting time 3min 30s



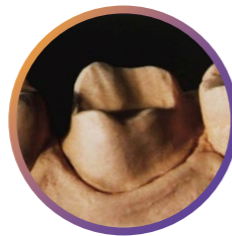
### QUALIFIED IMPRESSION



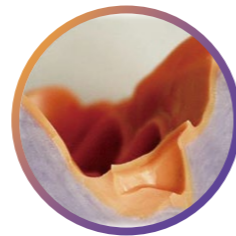
No bubbles



Shoulder is Clear, continuous and with consistent width.



The first impression and second impression should be well bonded



Gingival edge is continuous



## Elastomeric Impression Material

### CLINICAL SOLUTION SYSTEM



VINCISMILE GROUP LLC

Add: 20524 Carrey Rd. Walnut, CA 91789, USA Email: marketing@vincismile.com  
TEL: +1 626 283 5808 Web: www.vincismile.com

f @ y in  
Follow @VinciSmile





## Putty Hand-mix

**PERFIT PUTTY** is an high viscosity vinyl polysiloxane impression material, with remarkable tear strength, dimensional accuracy and excellent resistance to permanent deformation, it is proved to be a great choice for tray material.

**PERFIT Light body** is a low viscosity vinyl polysiloxane impression material with optimized thixotropy and hydrophilic properties, which ensures to provide high accuracy in impressions.

Putty combined with Light Body is designed to provide more options for attaining better control at each step, efficiently create accurate dental impressions for a variety of applications, including crowns, bridges, inlays, onlays, implant and orthodontics

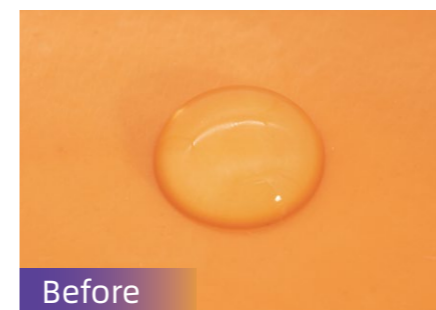


Technical Parameter	Putty		Light Body	
	Normal Set	Fast Set	Normal Set	Fast Set
Type	Normal Set	Fast Set	Normal Set	Fast Set
Mixing Time	30s	30s	/	/
Total Working Time	1min30s	1min15s	2min15s	1min30s
Setting Time in oral cavity	3min	2min30s	3min30s	2min30s
Elastic recovery	> 99.5%		> 99.5%	
Dimensional change rate	< 0.2%		< 0.2%	
Hardness Shore A	67		56	
Delivery form	400g*2 (250ml*2)		50ml*2	
Color	Base: Purple Catalyst: White		Base: Orange Catalyst: White	
Shelf life	2 years		2 years	



## Light Body

1. High flowability allows to reach the less accessible spaces of the gingival sulcus
2. Excellent hydrophilicity helps obtain the details quickly and reduce the risk of bubble formation, thus guarantee a high level of precision
3. Outstanding thixotropy ensures a better clinical experience



Before



After

